



Dear Parent/Guardian:

Thank you for considering St. Emily School for your children's education, and your family. You will find we are uniquely dedicated to helping students develop as individuals, by providing quality opportunities for academic and personal growth and achievement. St. Emily School is proud to be a vital part of a successful Catholic education system in Cook and Lake Counties. St. Emily students post outstanding acceptance rates at local Catholic College Prep high schools, and are consistently on published honor rolls in District 214 and 207 high schools.

Catholic schools, with our families, provide an environment in which the faith is not only taught, but lived. The faculty and staff of St. Emily School are prepared to work with you in developing your child's talents and abilities, through our vision of the graduate: a God-centered person of faith; a creative and reflective learner; a socially responsible global citizen.

St. Emily School was named a National Blue Ribbon School in 2011 based on overall academic excellence.

Whatever you dream for your children's future, we want to help make it come true for them. You have high expectations for your children, and so do we. With God's grace and our own hard work, we can make this a truly great experience for your children!

The enclosed materials will show you why a St. Emily School education is the best for your child. After your Open House visit, your child is invited to "shadow" with another student, for a partial or full day. Call the school office at (847) 296-3490 with any questions you may have.

Please visit our website at www.stemilyschool.org to see current events at St. Emily School, or follow us on Facebook and Instagram.

The St. Emily School staff and faculty look forward to working with you!

Sincerely,

Mrs. Mary K. Hemmelman
Principal

1400 E. CENTRAL RD. MT. PROSPECT, IL 60056 847-296-3490 WWW.STEMILYSCHOOL.ORG



EARLY CHILDHOOD EDUCATION - THE CATHOLIC SCHOOL DIFFERENCE

The Data

Research clearly shows that children who attend preschool are more likely to succeed in kindergarten, and that participating in early childhood education provides academic and social benefits that last well beyond the early years.

The Difference

When a child enters a preschool or kindergarten in a Catholic school, they become part of an established setting for learning. Our preschool and kindergarten classrooms are not just add-ons or separate programs. They are an integral part of the elementary school community and considered an important part of the learning continuum. Note that the **Archdiocesan curriculum** begins in preschool for all subjects. Most importantly children are welcomed into a community of faith, where they begin learning of God's love for them, and about love for others.

The Details

Today, one hundred percent of elementary schools have kindergarten programs, and ninety-seven percent have preschools. Each school structures its early childhood programs to meet the needs of its families and community. The offerings include mixed-age programs (3- and 4-year-old children in the same classroom) or separate age groupings.

Each school's early childhood program goes through a rigorous evaluation process and is recognized by the Office of Catholic Schools and the Illinois State Board of Education. Our programs follow Illinois State Board of Education Early Learning Standards and Kindergarten Standards. Teachers have Bachelor degrees (many have Masters degrees) and state certification. Assistant teachers are in the classroom, and enrollment is limited to meet adult/child ratio requirements. The learning environment meets nationally recognized criteria for high quality, such as those set forth by the National Association for the Education of Young Children.

The Decision

Use the **school locator** to find a Catholic school offering preschool or kindergarten near you. As the largest school system in the nation, our goal remains more students in great Catholic schools, doing what we do best in service to families and the future of our world and church.



Pre-K

February 2018

Dear St. Emily Prekindergarten Parents/Guardians:

We have completed the 2018-2019 St. Emily School budget. The School Board Finance Committee, the Parish Finance Staff, the Parish Finance Council, the Office of Catholic Schools and I have collaborated in planning our budget and setting tuition rates. We are pleased to report that we have been able to maintain the funding needed to support our rigorous, faith-based academic excellence and an average student/teacher ratio of 20:1.

Numerous studies have shown that “small-class students” achieve higher test scores, display better discipline, have higher rates of honors, and exhibit greater long term educational gains. This achievement is demonstrated among our 8th graders through their outstanding acceptance rates at Saint Viator, Loyola, Notre Dame, and Resurrection. Additionally, our students excel academically post-St. Emily as evidenced by our alumni presence on published honor rolls at Prospect, Hersey and Maine West High Schools.

The tuition rates for the 2018-2019 school year are as follows:
PREKINDERGARTEN (without siblings) TUITION 2018-2019

Prekindergarten WITHOUT Pre-K to 8 student	Tuition for 2018-2019	Eagle-Rama	Instructional Materials Fee	Total	Per month
Full (5) day Pre-K 3 & 4 yr. old	\$6,306	\$125	\$400	\$6,831	\$683
4 full days without K-8 student	\$5,044	\$125	\$325	\$5,494	\$549
3 full days without K-8 student	\$3,783	\$125	\$250	\$4,158	\$416
2 full days without K-8 student	\$2,522	\$125	\$175	\$2,822	\$282
5 half days	\$4,625	\$125	\$275	\$5,025	\$503
4 half days	\$3,700	\$125	\$225	\$4,050	\$405
3 half days	\$2,775	\$125	\$175	\$3,075	\$308
2 half days	\$1,850	\$125	\$125	\$2,100	\$210

Explanation of Pre-K fees:

- \$125 Eagle-Rama (5 raffle tickets to keep or sell) per family
- Half day Pre-K Instructional Materials Fee includes lab use & snacks
- Full day Pre-K Instructional Materials Fee includes lab use, snacks & mats

These are challenging economic times for many families, including those of our school and our parish. The cost to educate one full-time student is \$7,500. Our tuition does not cover the true cost of educating each child at St. Emily. The difference is made up through fundraising and the parish investment, which means that each child receives a scholarship.

If you have not already done so, please return your 2018-2019 application to the school office. We need a firm view of our registered students in order to adequately plan for faculty and resources for the 2018-2019 school year.

- Ten percent of tuition is due June 15th.
- The balance will be spread over 9 equal payments due on the 15th of each month from August 2018 through April 2019.
- The Prekindergarten Registration Fee is \$100 each for 1st and 2nd child (\$50 each for 3rd and 4th child). This is due by March 7th. After March 7th, the registration fee becomes \$150 each for 1st and 2nd child, and \$100 for each additional child.
- Recommended donation to St. Emily Parish is \$500 per family per year.

Thank you for your continued support of St. Emily School and our tradition of faith-based academic excellence!

Sincerely yours,
Mary K. Hemmelman
Principal



Learning is a treasure that will follow its owner everywhere.

~Chinese Proverb



February 2018

Dear St. Emily Parents/Guardians:

We have completed the 2018-2019 St. Emily School budget. The School Board Finance Committee, the Parish Finance Staff, the Parish Finance Council, the Office of Catholic Schools and I have collaborated in planning our budget and setting tuition rates. We are pleased to report that we have been able to maintain the funding needed to support our rigorous, faith-based academic excellence and an average student/teacher ratio of 20:1.

Numerous studies have shown that “small-class students” achieve higher test scores, display better discipline, have higher rates of honors, and exhibit greater long term educational gains. This achievement is demonstrated among our 8th graders through their outstanding acceptance rates at Saint Viator, Loyola, Notre Dame, and Resurrection. Additionally, our students excel academically post-St. Emily as evidenced by our alumni presence on published honor rolls at Prospect, Hersey, and Maine West High Schools.

The tuition rates for the 2018-2019 school year are as follows:
PK (with siblings) to 8th FULL DAY TUITION 2018-2019

PK-8 Number of children	Tuition 2018-2019	Eagle- Rama	Book/tech Fee	Total	Per month
K-8 (1 Child)	\$5,345	\$125	\$400	\$5,870	\$587
PK-8 (2 Children)	\$8,551	\$125	\$800	\$9,476	\$948
PK-8 (3 Children)	\$11,440	\$125	\$1,200	\$12,765	\$1,277
PK-8 (4+ Children)	\$13,895	\$125	\$1,600+	\$15,620	\$1562

Part time Prekindergarten WITH K-8 student	Tuition for 2018-2019	Eagle- Rama	Instructional Materials Fee	Total	Per month
4 full days with K-8 student	\$4,229		\$325	\$4,554	+ \$455
3 full days with K-8 student	\$3,171		\$250	\$3,421	+ \$342
2 full days with K-8 student	\$2,114		\$175	\$2,289	+ \$229
5 half days w/ 4 half days w/	\$2,680		\$275	\$2,955	+ \$296
3 half days w/	\$2,302		\$225	\$2,527	+ \$253
2 half days w/	\$1,924		\$175	\$2,099	+ \$210
	\$1,546		\$125	\$1,671	+ \$167

Explanation of fees Pre-K to 8th grade Full Day:

- \$125 Eagle-Rama (5 tickets to keep or sell) per family
- \$400 book/technology fee for each child
- Half day Pre-K Instructional Materials Fee includes lab use & snacks
- Full day Pre-K Instructional Materials Fee includes lab use, snacks & mats

These are challenging economic times for many families, including those of our school and our parish. The cost to educate one student is over \$7,500. Our tuition does not cover the true cost of educating each child at St. Emily. The difference is made up through both fundraising and the parish investment, which means that each child receives a scholarship.

If you have not already done so, please return your 2018-2019 enrollment form to the school office. We need a firm view of our registered students in order to adequately plan for faculty and resources for the 2018-2019 school year.

- The Pre-K-8 Registration Fee is \$100 each for 1st and 2nd child (\$50 each for 3rd and 4th child). This is due by March 7th. After March 7th, the registration fee becomes \$150 each for 1st and 2nd child, and \$100 for each additional child.
- Recommended donation to St. Emily Parish is \$500 per family per year.
- Ten percent of tuition is due June 15th
- The balance will be spread over 9 equal payments due on the 15th of each month from August 2018 through April 2019

Thank you for your continued support of St. Emily School and our tradition of faith-based academic excellence!

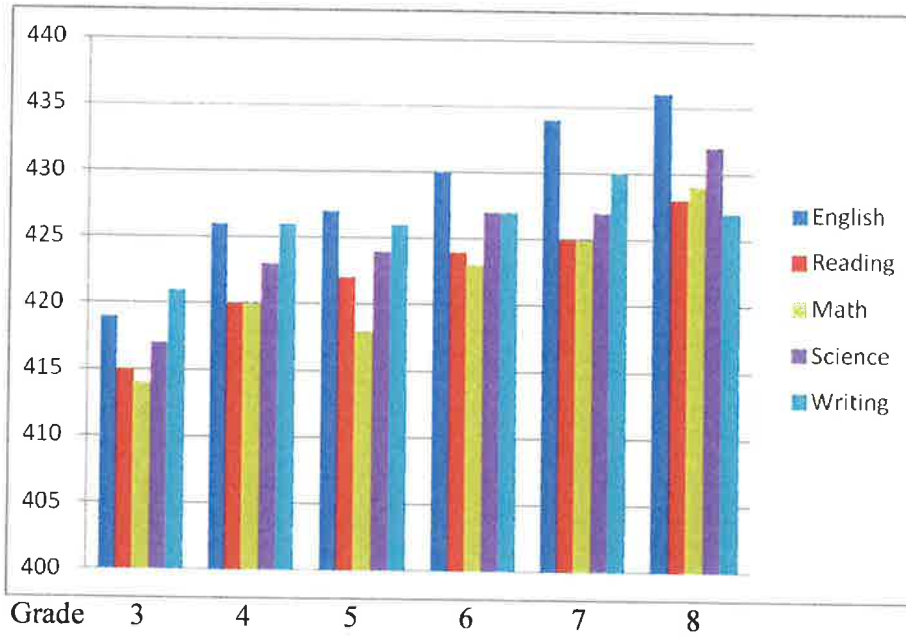
Sincerely yours,
Mary K. Hemmelman
Principal



Learning is a treasure that will follow its owner everywhere.

~Chinese Proverb

ACT Aspire Benchmark Grade level Performance 2017



St. Emily School ACT Aspire grade-level Performance with Benchmarks 2017

Grade	3	4	5	6	7	8
English	419	426	427	430	434	436
Benchmark	413	417	419	420	421	422
Reading	415	420	422	424	425	428
Benchmark	415	417	420	421	423	424
Math	414	420	418	423	425	429
Benchmark	413	416	418	420	422	425
Science	417	423	424	427	427	432
Benchmark	418	420	422	423	425	427
Writing	421	426	426	427	430	427
Benchmark	428	428	428	428	428	428

Academics

St. Emily students are encouraged to learn and are challenged to soar to the next level in their scholastic journey. Our school is a National Blue Ribbon School because of our students, teachers, staff and parents.

Specials Classes: Pre-kindergarten – 8th grade

- **Computers:** From Pre-K learning the mouse and keyboard, to 8th grade using Office and the internet for research projects; all are instructed in personal use and safety.
- **Art (K-8):** Students learn hands-on, styles, techniques and medium of the great art-masters.
- **Music:** includes orchestra instrumentation and provides opportunities for performance including improvisation, skits and radio-plays. Kindergarten through 8th grade participates in a Christmas Program that includes both singing and acting.
- **Physical Education** (2x per week): PE curriculum is tailored to match the motor skills of each grade, as well as grade-level healthy lifestyle choices.
- **Spanish:** Hola! The students will become familiar with Spanish vocabulary, sentence structure, verb conjugation, grammar, cultural traditions, expressions, and prayer in written, listened, and spoken forms.

Technology

- E-beam/interactive/white board technology available for all classrooms
- Computer lab for Pre-k through 8th grade
- iPad cart available to each classroom

Leveled math and reading programs

- Challenge each student according to their need [Grades 4-8]

Reading Resource/Enrichment programs

- Supplementary reading services tailored to child's needs
- Enrichment for students that need a more challenging curriculum

Full Science Laboratory

Religion

- All students attend morning Mass on Friday, prepared and lead by grades 2-8
- 2nd grade students receive two sacraments; Reconciliation and First Holy Communion
- Grades 5 and 6 lead a Triduum service on Holy Thursday
- 5th thru 8th grade students may assist at Mass as altar servers
- 7th grade leads a Lenten prayer service
- 8th grade presents Candlelighting for Advent, and Living Stations during Lent
- 8th grade students receive the sacrament of Confirmation
- Priest visits the classroom during Religion class

For more information on each grade's curriculum, please view our website under Academics.



Pre-Kindergarten Curriculum

Full day, 8:00 a.m.-2:45 p.m., half day, 8:00 a.m.-11:00 a.m.; both focus on academics. Mornings may include prayer, calendar, weather, jobs, table toys, art projects, coloring, cutting, songs, finger-play, books, colors, shapes, numbers, journaling, letters, phonics skills, handwriting, and a snack. After lunch we have rest time, snack, time to play games, finish up morning work, and outdoor recess.

Reading and Language Arts

- Focus on the alphabet; recognizing capital and lower case letters, as well as their sound
- A "rhyme a week" involves rhyming and sounding out words
- Write in journals
- Read books daily

Math

- Focus on colors, shapes, and numbers 0-20
- Sorting, counting, and estimating

Handwriting

- The Handwriting Without Tears program is used

Science

- Cooking, measuring, and pouring
- Magnets and magnifying glasses
- Planting
- Raise painted lady butterflies

Religion

- The religion corner includes children's bibles, rosaries, and items of the liturgical year
- Focus on treating people the right way, and feelings, including discussions about Jesus
- Simple prayers every morning, and before snacks; learn the Hail Mary
- Attend Mass weekly, and other church services throughout the year

Social Studies

- Units studied include family, community helpers, holidays, and the three R's (respect, responsibility, and right choices)

Computers

- Understand, and use the mouse, keyboard, and monitor; through games involving colors, shapes, numbers, letters and subjects such as math, reading, science and social studies

Spanish

- Beginning language including colors and numbers

Music

- Weekly participation in *Music and Movement* class

Physical Education

- Work to advance child's basic motor skills
- Activities such as riding toys, parachutes, hula hoops
- Basic stretching is introduced, to begin to stretch core muscles
- Introduction to simple sports such as soccer and basketball

Activities and Events

- Field Trips: Pumpkin Farm (3 & 4) and Marriott Theater (4 yr. only)
- Visits from a fireman, dentist, and librarian
- All-school activities: Fun Fest, Track-a-thon, school assemblies
- Classroom holiday parties
- Christmas Program
- Pre-K graduation (4) and End of year program (3)



Extra Curricular Activities

St. Emily School is dedicated to nurturing the whole child. We recognize the value of developing team building and social skills, in addition to academics. We believe these programs develop necessary life skills such as leadership, cooperation and creativity. St. Emily students are invited to participate in: *Academic Competitions, Altar Serving, Band, Bok Clubs, Drama Club, Lego Club, NJHS, Pep Club, Science Clubs, Scouting, Student Council, Rainbows, Talent Show and Yearbook Club.* See Extra Curricular Activities on our website.

Student Service Projects

St. Emily School is proud of the service we provide for the community. Service projects, benefiting the school and community are many and varied. Along with the school, many organizations contribute to these events.

St. Emily students participate in:

- Pen Pal project, recycling and an art project with SWANNC, Skyping with an orphanage in Mexico nursing home visit, all-school Christmas Toy Drive for needy families in our area

St Emily NJHS students participate through:

- Sponsoring charitable activities such as Walking Taco lunch and EyeSee eyeglass collection
- the Giving Tree, providing food and toys for the needy in the River Trails community at Christmas
- Sponsoring Candy Grams at Christmas - distributing candy cane Christmas wishes within the school
- Serving as tour guides during the Catholic Schools Week Open House

Athletics



The St. Emily Eagles compete in tournaments and The Northwest Catholic Conference in both boys and girls Athletics. The athletic program starts in 4th grade with Cross Country and Basketball.

Girls:

- Basketball: 4-8th grade Winter
- Cross Country 4-8th grade Fall
- Volleyball: 5-8th grade Fall
- Track and Field 5-8th grade Spring
- Softball 5-8th grade Spring
- Cheerleading 6-8th grade All year

Boys:

- Basketball 4-8th grade Winter
- Cross Country 4-8th grade Fall
- Volleyball 5-8th grade Spring
- Track and Field 5-8th grade Spring

89% of our students in grades 4-8 commit to the demanding schedules and standards involved in being a student-athlete at St. Emily School. We are proud of their hard work and sportsmanship.

St. Emily Athletics has won 44 conference championships since 1977 -- 45 championships in 39 years. St. Emily Cross Country and Track programs have had more athletes qualify for State competitions than any other school in the NWCC. St. Emily 2014 Cross Country team took 3rd place in the IESA State Finals.

St. Emily Pep Club and Yearbook Staff members show their support and share their EAGLE PRIDE by attending *Pack the Gym* home games.



Extended Care Program



Director: Mrs. Kathy Wosz

Hours

6:30 a.m. – 7:45 a.m.

2:45 p.m. – 6:00 p.m.

(A late fee is charged for students consistently picked up after 6:00 p.m.)

Fees and Rates

Registration Fee: \$30.00 *per child* non-refundable

Hourly rates:

1 child \$6

2 children \$9

3 children \$12

* Fall & Spring Short Term registration \$10 per child per season

* Short Term Sports – Hourly rates Apply

About the Program

In the extended care room, the children can play, do arts and crafts projects and various other free choice activities. A supervised homework area is available for the students. After school, the children are in the gym until 3:30 pm and then proceed to the extended care room; where the program provides a snack.

Allergies/Medical Conditions

Allergies and medical conditions are treated with respect and confidentiality. In the case of food allergies, the entire group of extended care students is taught about precautions and the consequences of what can happen when rules are not followed. Safety of students is our priority.

Emergency/Safety

Your child's safety and well-being is the first and most important issue for our extended care staff. No adult will be allowed to take children from school grounds without notifying one of the supervisors and signing the appropriate form. Students will be released to someone other than a parent only after the staff receives instruction from the parent, picture identification, and recognition by the child. If there is any reason to question the release of a child, a parent will be contacted. The school administration reserves the right to hold a child until the staff contacts a parent and is fully satisfied that the release of the child is in the child's best interest. *Any legal documents regarding child custody or a restraining order must be on file in the school office.*

Behavior

As members of a Catholic Christian Community, all are expected to RESPECT each other, the materials and the environment. The expectations of student behavior in school also apply in the extended care program.

See separate registration form and weekly schedules.